

# 170 Years of Goulds Pumps

Providing innovative Engineered Solutions for the Next Century



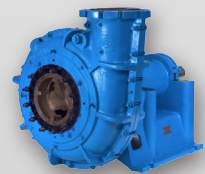
**1848** Goulds Pumps opens in Seneca Fall, NY., site of first Women's Rights Convention.

Goulds Pumps produces a wooden pump banded with iron...later the company introduced the first all-metal well pump.

**1885** First fire engine with its new deluge suction and lift pump is introduced.

**1905** Two Goulds triplex pumps are installed in the New York Times building, at 387 feet, 6 inches, it is the highest lift in New York City.

**1920** The first hard metal slurry pump is introduced.



**1921** The first rubber lined slurry pump is developed.

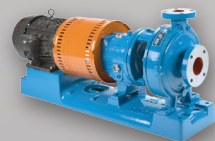


**1923** The first close-coupled pump was introduced. This pump used the motor shaft to directly drive the pump's impeller, simplifying the design and reducing the amount of space required.

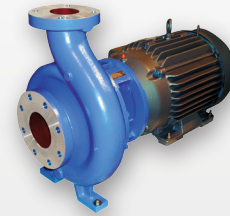


**1932** The first self-priming centrifugal pump is developed. The first paper stock pump is introduced.

**1937** Introduces first back pull-out pump, a forerunner to the ANSI process pump design.



**1961** Launch of Goulds 3196, the first AVS (American Voluntary Standards) Pump which became the first ANSI pump.



**1964** The first API pump is introduced.

**1969** Goulds 3196 is adapted to ANSI Standards. It is the most popular process pump in history with over 600,000 units in service worldwide.



**1977** Goulds first PTFE lined pump for aggressive chemical handling is introduced.

**1995** The patented Taper Bore Plus® optimizes seal chamber design and results in extended seal life.

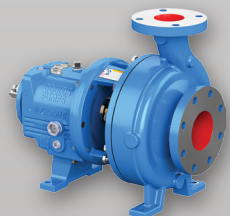
**1997** ITT purchases Goulds Pumps.



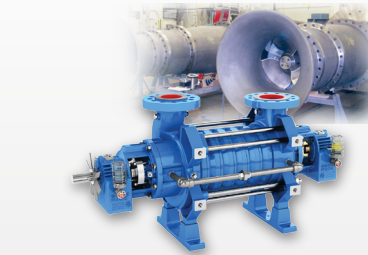
**1999** PumpSmart® intelligent flow control is introduced and promises greater process control plus significantly reduced operating and life cycle costs for pumping equipment / Low and medium voltage models have been developed and updated since then IC Series world-class, ISO dimensional process pumps are introduced, featuring modular design with broad hydraulic coverage.



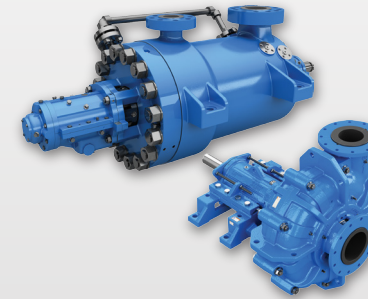
**2005** Introduced ProSmart® predictive condition monitoring systems to identify and solve problems before they impact production.



**2008** Marking an industry first, the new Goulds 3196 i-FRAME® provides early warning of trouble so that changes to the process or machine can be made before failure occurs. Other advances in bearing technology, oil sump design and lubricant protection make the 3196 i-FRAME® pump the new standard in reliability / The world's first patented intelligent condition monitoring system for pumps is introduced, the i-ALERT® monitor.

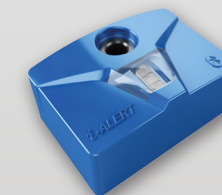


**2010** Goulds 3393 high-pressure ring section pump designed for general industries and desalination process is introduced / Launch of Goulds VCW, double suction vertical pumps.



**2011** Goulds XHD next generation product that can handle the heaviest slurry under the toughest conditions is introduced. It incorporates several innovative features for easier maintenance and longer wear life / Goulds 7200CB barrel (BB5) pump was updated to API 11th edition for demanding oil & gas applications. It is a high temperature, high pressure, low specific-gravity pump for critical services.

**2012** Expands into multiphase / positive displacement technologies with acquisition of Bornemann Pumps.



**2015** Launch of i-ALERT®2 Equipment Health Monitor, a fitness tracker for pumps and other rotating equipment. It puts monitoring and diagnostics in the hands of everyday users, empowering anyone to safely monitor equipment from a distance.



**2016** Launch of PumpSmart® PS220 v6, a next-generation intelligent pump control and protection solution for single and multi-pump operations. It provides variable speed pump control and has many industry leading and innovative features.



**2017** Launch of i-ALERT Ai, a web-based asset intelligence platform / Launch of VICR, a compact vertical multi-stage low flow, high head pump / Launch of API i-FRAME® Bearing Housing.



An ITT Brand