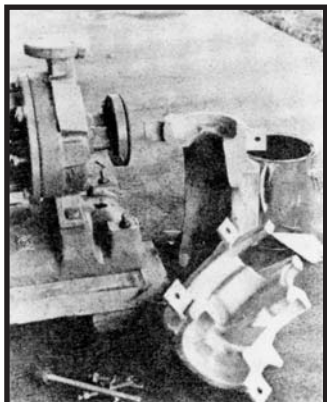




Installation Instructions

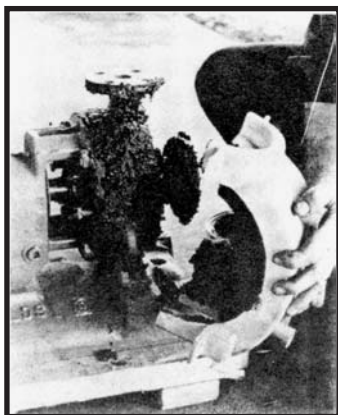
Contro-Heat Jacket



- 1** After pump is piped in line, assemble jacket, bolts, and standard heat transfer cement.

Apply generous amount of heat transfer cement to pump body and jacket section.

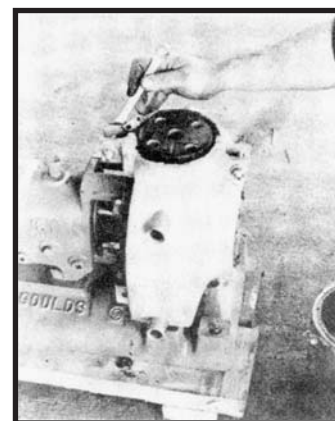
2



- 3** Fit each section of jacket into place. Be sure that all surfaces are completely covered with heat transfer cement.

Securely tighten jacket to pump so that cement extrudes to completely fill all voids. Clean up.

4



Recommended heat transfer cements:

1. Thermon™ standard grade — Thermon Manufacturing Company
2. Zeston Z-10 — Johns-Manville Corporation
3. TRACIT 300 — Chemax Corporation
4. Grade TC — Dylon Industries

NOTE: Follow manufacturer's instructions for proper curing of heat transfer cement.

Goolds Pumps