



# GOULDS PUMPS

## Polyshield® Baseplate/Foundation System



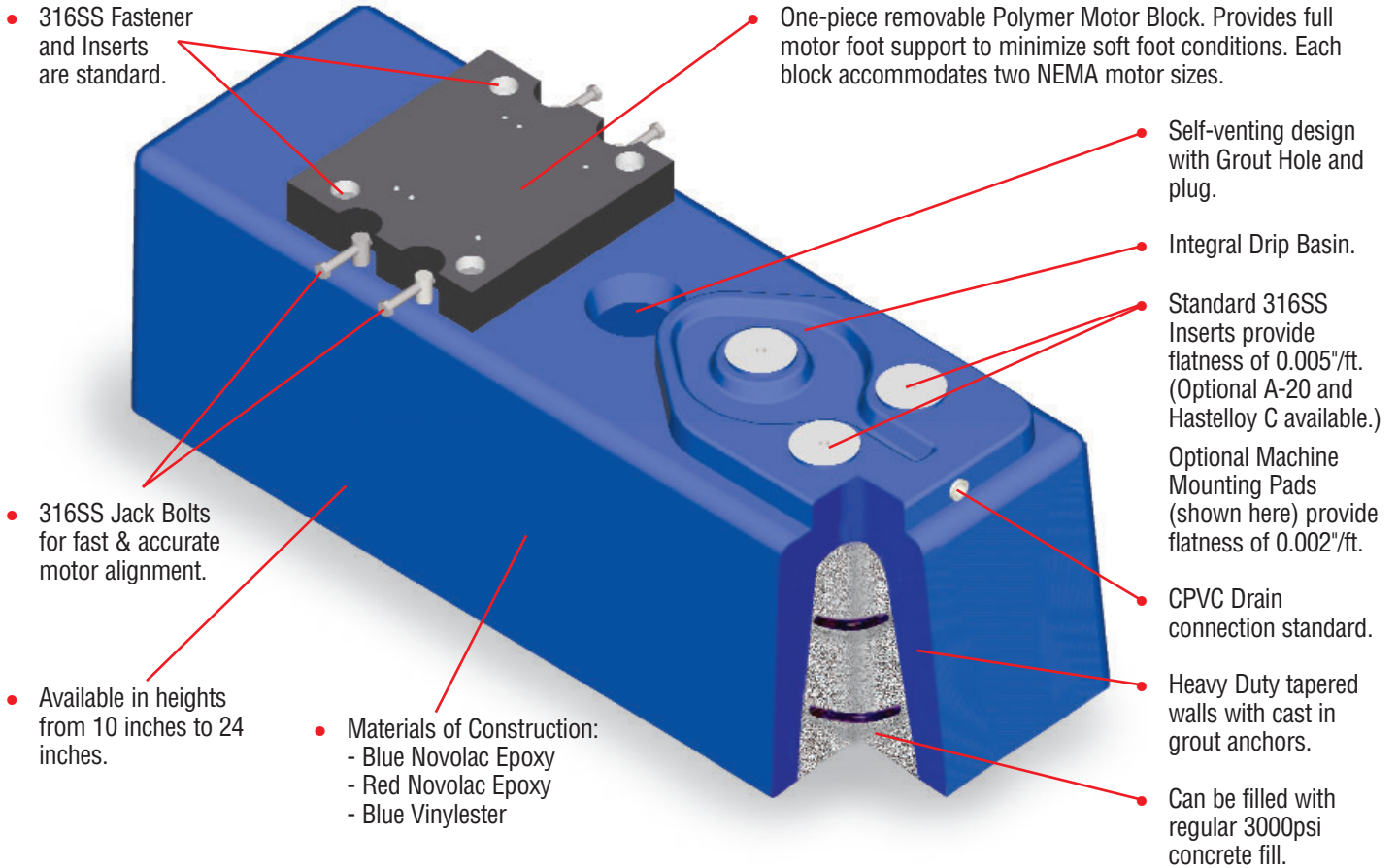
**GOULDS**  
**CORROSION**  
**GUARANTEE**

Goulds Pumps



**ITT Industries**  
*Engineered for life*

# Polyshield® Baseplate/Foundation System



## The Polyshield® Advantage

- One-piece high strength rigid construction resists twisting and diaphragming.
- High vibration dampening characteristics.
- Extremely flat mounting surface (up to 0.002"/ft.).
- One-piece polymer motor block minimizes possibility of soft foot.
- Reduced installation and alignment time.
- High corrosion resistance.
- Overall reduced installation time and cost.

## Before you buy any baseplate, consider the total installed costs.

Reducing overall equipment costs today means looking farther than just the initial capital investment. It means understanding the relationship with the other disciplines in the plant and buying the most cost effective solution.

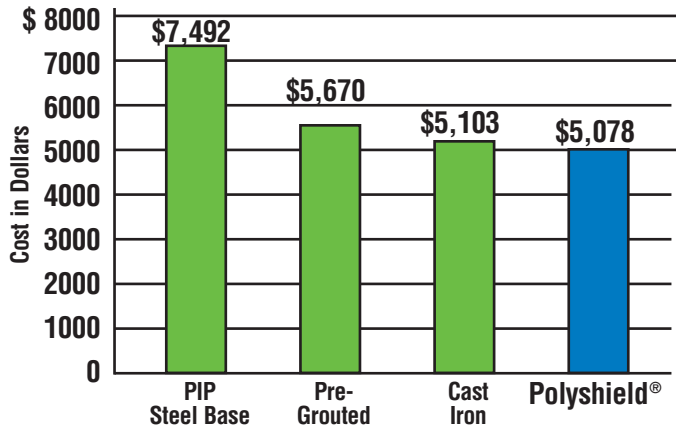
Polyshield® is just that – a cost effective, simple and reliable way to get the most out of your pumping equipment. Compare what it costs to install a typical metal baseplate to a **Polyshield®**:

<b>Installed Cost Comparison: Cast Iron (or) Fab Steel Base vs. Polyshield®</b>						
<b>3196 STX</b>	<b>Baseplate</b>	<b>Foundation Concrete</b>	<b>First Pour Epoxy Grout</b>	<b>Second Pour Epoxy Grout</b>	<b>Installation Labor</b>	<b>TOTAL</b>
CI or FS Base	\$ 409	\$ 290	\$ 72	\$ 212	\$ 4120	\$ 5103
PIP Style Base	2798	290	72	212	4120	7492
Epoxy Filled Metal Base	2548	290	72	–	2760	5670
<b>Polyshield®</b>	<b>3308</b>	<b>310</b>	–	–	<b>1480</b>	<b>\$ 5098</b>

# Now compare the advantages!

## Significantly Less Installation Costs

Because of the reduced number of steps, Polyshield® can lower the number of hours needed to complete the installation up to 64% over conventional Cast Iron or Fab Steel bases.



## Chemical Resistance

Polyshield® offers superior chemical resistance to aggressive inorganic acids, dilute organic acids, alkalines and organic solvents up to 250° F (115° C). Eliminates the need for expensive acid brick foundations.

ACIDS	ALKALINES	SOLVENTS, CHEMICALS
1-50% Acetic	1-50% Sodium Hydroxide	Acetone
1-25% Adipic	1-20% Ammonium Hydroxide	Acetaldehyde
1-10% Chromic	1-50% Potassium Hydroxide	Acetonitrile
1-37% Hydrochloric	1-15% Sodium Cyanide	Acrylonitrile
1-50% Nitric	1-9% Sodium Hypochlorite	Ethyl Acetate
1-85% Phosphoric	1-30% Hydrogen Peroxide	Butyl Acetate
1-98% Sulfuric	Copper Cyanide Plating	Methyl Ethyl Ketone
Oleic	Barium Hydroxide	1,1,1 Trichloroethane
	Cadmium Cyanide Plating	Methylene Chloride
	Black & Green Pulp Liquor	Cyclohexane
		Formaldehyde
		Kerosene or Jet Fuel

Method Comparison		
Typical Procedure	Concrete Foundation	Polyshield Foundation
Install rebar	■	■
Construct a form	■	
Mix concrete	■	
Pour concrete	■	
Wait for initial cure	■	
Break out form	■	
Cure for 7-28 days	■	
Prepare surface	■	
Apply coating	■	
Cure coating	■	
Place and fill Polyshield		■
Mount equipment	■	
<b>Elapsed Time</b>	<b>6½ - 13 days</b>	<b>1½ - 2 days</b>

## Fewer Skilled Crafts Needed

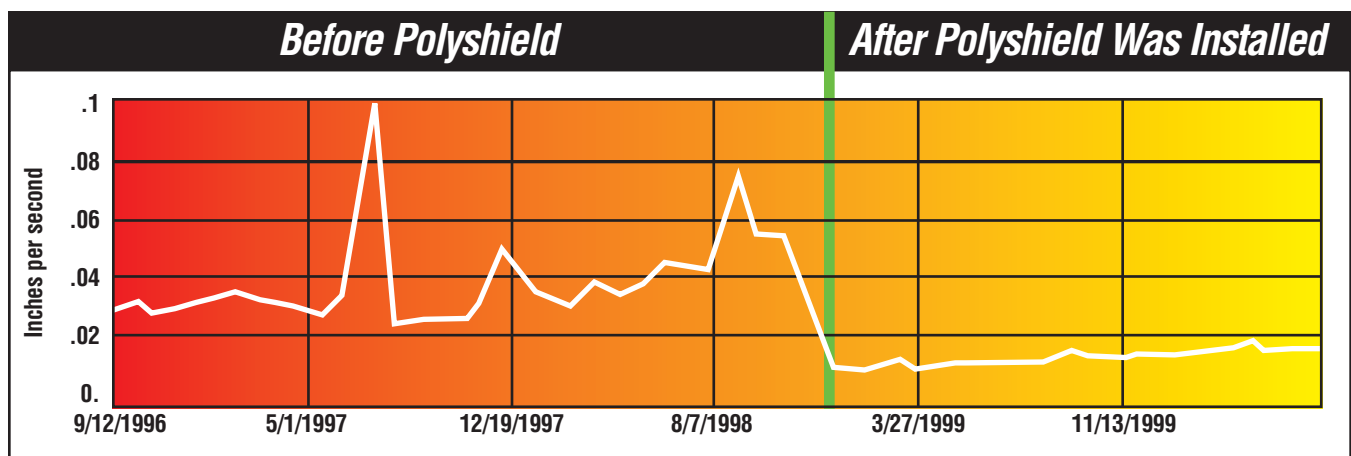
Polyshield® is pre-cast and extremely rigid, therefore only **basic** steps are needed to guarantee a perfect installation. This translates to **Big Savings!**

## Quickest Installation Time

Short plant turn-arounds are no problem with Polyshield®. You can be up and running in **48 hours!**

## High Vibration Dampening

Because Polyshield® is a Polymer mix using epoxy resins, it is inherently able to dampen vibration which translates to longer seal and bearing life and lower maintenance costs!



# Installation Steps for Polyshield®



*Install new rebar cage  
(new installation) or  
expose existing rebar  
(existing installation).*



*Install Polyshield®  
Foundation complete with  
pump and motor over rebar.*

*Note: No need to remove  
pump and motor.*

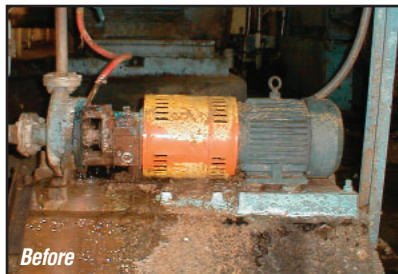


*Fill the form with  
inexpensive regular  
3000psi concrete fill.*

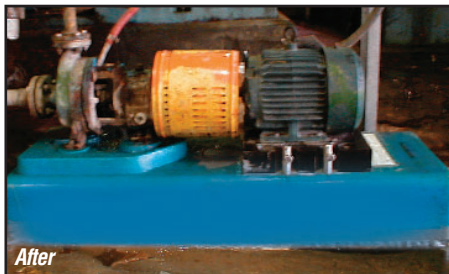
# Installation & Maintenance Savings

- **Baseplate & Foundation**  
Polyshield® Baseplates are less expensive than most metal bases and epoxy grout foundations.
- **Grout**  
Polyshield® Baseplates are filled with regular 3000psi concrete fill which is less expensive than epoxy grouts.
- **Preparation**  
Metal baseplates must be sandblasted for grout adhesion. Polyshield does not.
- **Installation**  
No concrete forms, no grout air pockets and no long cure times as with metal baseplates.
- **Maintenance**  
Excellent corrosion resistance, no paint peeling and no maintenance.
- **Shaft Alignment**  
Rigid Polyshield® Baseplates make for quick and easy alignment.

## Consider Polyshield® for Custom Packages and Retrofits



*Before*



*After*

*We recognize problems and address root causes of failure...  
not just mechanical symptoms.*

- Custom sizes also available for a wide variety of machinery applications.
- For further chemical resistance, Polyshield systems can also be molded in Vinylester and Furan.
- Full Factory engineering support.
- Twenty-four hour, seven-days-a-week *emergency service*.
- Turnkey installation is available via Goulds PRO Services organization.
- Experience with all manufacturers' equipment provides best available practices and designs in repairs.

**Polyshield® Guarantee: Goulds warrants every Polyshield® against chemical attack.**

*For more information, call your nearest Goulds sales office, representative,  
or PRO Service Center or visit our website at [www.gouldspumps.com](http://www.gouldspumps.com).*

## Goulds Pumps



**ITT Industries**

*Engineered for life*