

# Liners With Ceramic Media (CRM) for SRL Pumps

CRM liners incorporate a layer of ceramic rods that are compression-molded with natural rubber for superior wear performance. This combines hard ceramic wear face with the resilience of natural rubber.

In field trials, the wear life of the CRM liners in severe primary grinding circuits was two to four times that of the standard all-natural rubber liners alone.

Because CRM liners retain their original geometry longer, pump efficiency is maintained throughout wear life.

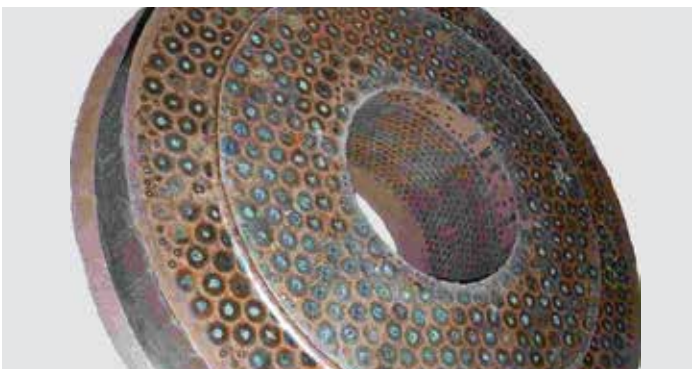
The longer wear life of the CRM liners also helps extend the life of the impeller and casing liners. In one test, the natural rubber suction wear plate and impeller lasted 432 and 500 hours respectively. With the CRM liner, the life of both the impeller and suction wear plate increased to 900 hours. Casing liners averaged 1,100 hours each.

Higher mean time between maintenance reduces downtime and improves overall life cycle cost. Predictable parts wear life allows scheduling of equipment maintenance.

- Significantly reduces overall pump life cycle costs
- Extends wear plate life two to four times compared to an elastomer part
- Extends MTBM for pumps
- Reduces plant downtime and cost
- Maintains pump efficiency longer
- Ideal for severe SAG and ball mill circuits
- Proven in field trials
- Competitively priced

## CRM suction wear plates are available for:

Pump Model:	CRM Wear Plate Part #:
6x6-21 SRL-XT	98-333-849-501
8x8-25 SRL-XT	C03452E0001378
10x10-28 SRL-XT	C03374E0001378
14x12-36 SRL-XT	C03457E0001378
8x6-18 SRL-C	Contact Factory
10x8-21 SRL-C	C03713E5081378
12x10-25 SRL-C	98-333-848-501
14x12-29 SRL-C	Contact Factory
16x14-34 SRL-C	C03781E5011378
20x18-40 SRL-C	98-434-122-501



Natural Rubber CRM Liner for 10x10-28 SRL-XT Pump



A-C 14x12-36 SRL-XT Pump